



Valsequillo Silver Project



April 2012

www.wealthminerals.com

TSX-V: WML
OTCQX: WMLLF

Disclaimer

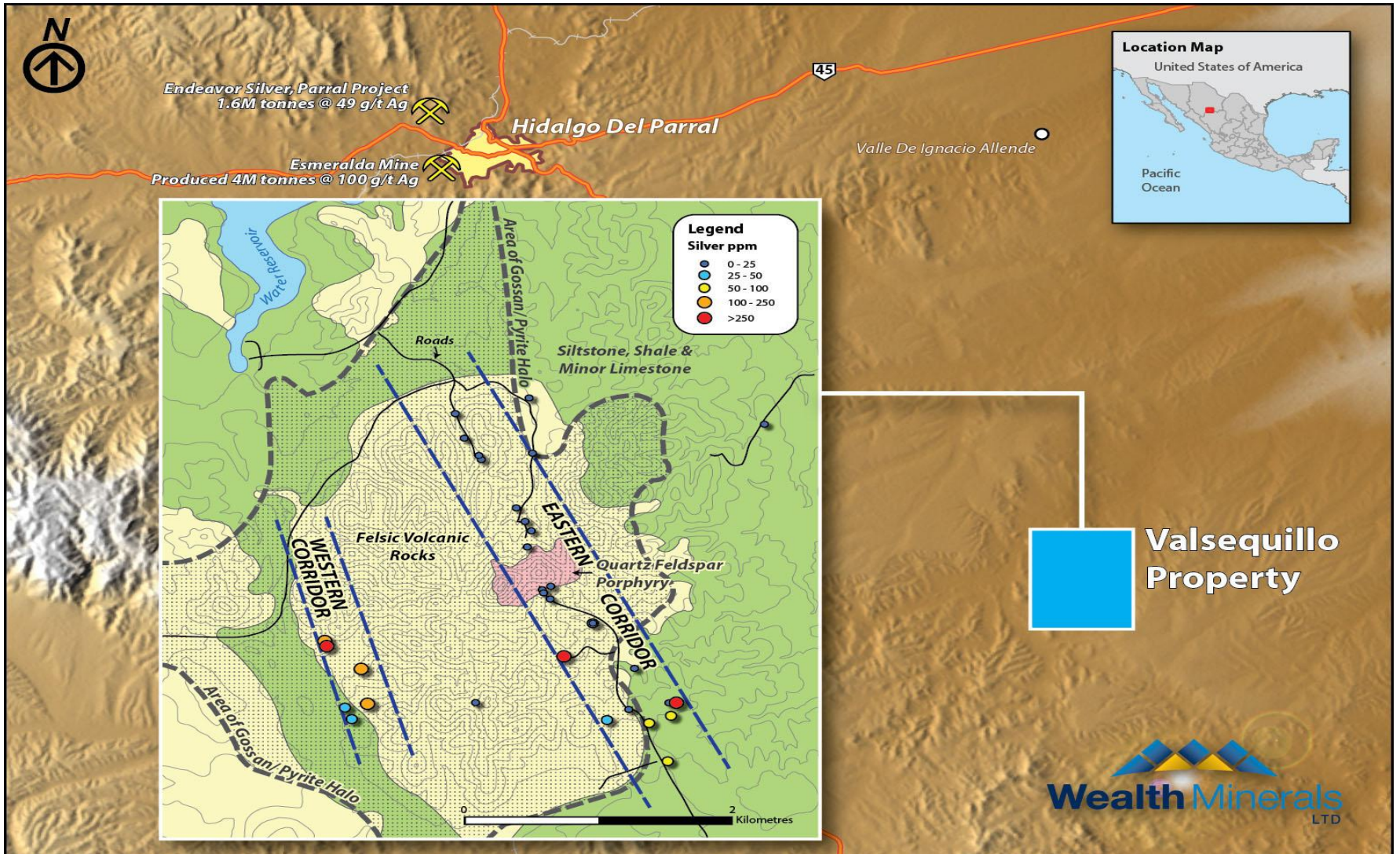


Certain statements contained in this document, including, without limitation, those concerning the economic outlook for the mining industry, expectations regarding metal prices and production, the completion and commencement of commercial operations of certain of Wealth Minerals Ltd. (WML) projects, and its liquidity and capital resources and expenditure, contain certain forward-looking statements regarding WML's economic performance and financial condition. Although WML believes that the expectations reflected in such forward-looking statements are reasonable, no assurance can be given that such expectations will prove to have been correct. Accordingly, results could differ materially from those set out in the forward-looking statements as a result of, among other factors, changes in economic and market conditions, success of business initiatives, changes in the regulatory environment and other government actions, fluctuations in metal prices and exchange rates, and business and operational risk management. WML undertakes no obligation to update publicly or release any revisions to these forward-looking statements to reflect events or circumstances after the date of the annual report. All subsequent written or oral forward-looking statements attributable to WML or any person acting on its behalf are qualified by the cautionary statements herein.

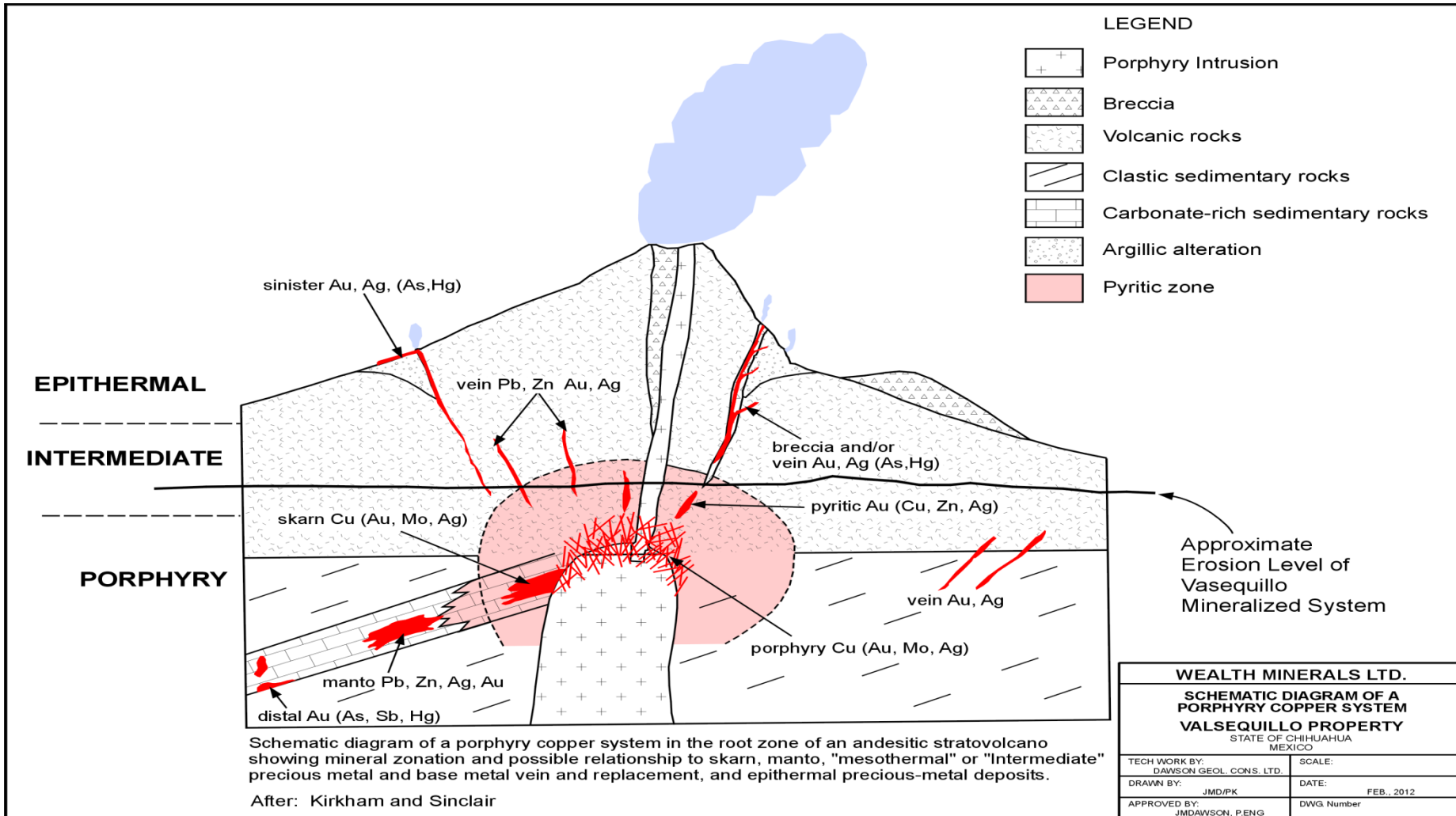
Valsequillo Property

The Valsequillo Property is located in southern Chihuahua state, Mexico, approximately 200 km. south of the capital, Chihuahua city and about 40 km. southeast of the city of Hidalgo Del Parral within the Altiplano Polymetallic Belt of north-central Mexico. The property consists of a 6 X 5 km. rectangular block of 3000 hectares. Access and infrastructure are excellent, topography is moderate with elevations varying between 1650 and 1900 meters above mean sea level and water is readily available.

Preliminary Mapping



Schematic Diagram



Management and Directors

Henk Van Alphen, *President & CEO*

- President of Cardero Resource Corp.
- \$200M+ raised over successful 25+ year career in mining industry

Paul Matysek, M.Sc., P.Geol., *Director*

- Former CEO of Potash One Inc; engineered \$450 million friendly takeover
- Founder of Energy Metals Corp, sold for \$1.8 billion

Jeff Pontius, M.Sc., *Director*

- Former CEO of International Tower Hill Mines
- Led discovery and development of >25MM oz gold (Cripple Creek, Livengood)

Maurice Strong, P.C., O.C., LL.D., *Director*

- 30+ years at senior levels in business, government and international organizations
- Former Under Secretary General of the UN; Former Sr. Advisor to President, World Bank

Jim Dawson, P.Eng., *Director*

- Over 40 years of hands-on exploration and mining experience
- Director of Minefinders Corporation, Advisor to Discovery Group

Dean Linden, Corporate Development

- 15 years of experience in the area of Investor Relations and Corporate Communications
- Director of Corporate Communication, ID Biomedical which was acquired for \$1.7B

Capital Structure



shares issued	57,258,108
options	5,085,000
warrants	3,953,000
fully diluted	66,296,108

	Number	Expiry	Price
Warrants	28,000	Nov 2012	\$0.50
Warrants	3,925,000	Nov 2012	\$0.50
Options	500,000	Oct 2012	\$0.50
Options	2,000,000	Oct 2012	\$0.68
Options	300,000	Sep 2013	\$0.34
Options	1,200,000	Oct 2013	\$0.20
Options	1,120,000	Jan 2014	\$0.16

Management: ~34%
Funds/Institutions: ~6%



December 12th, 2011



For More Information:

+1 604 638 1429

info@wealthminerals.com



December 2011

www.wealthminerals.com

TSX-V: WML
OTCQX: WMLLF